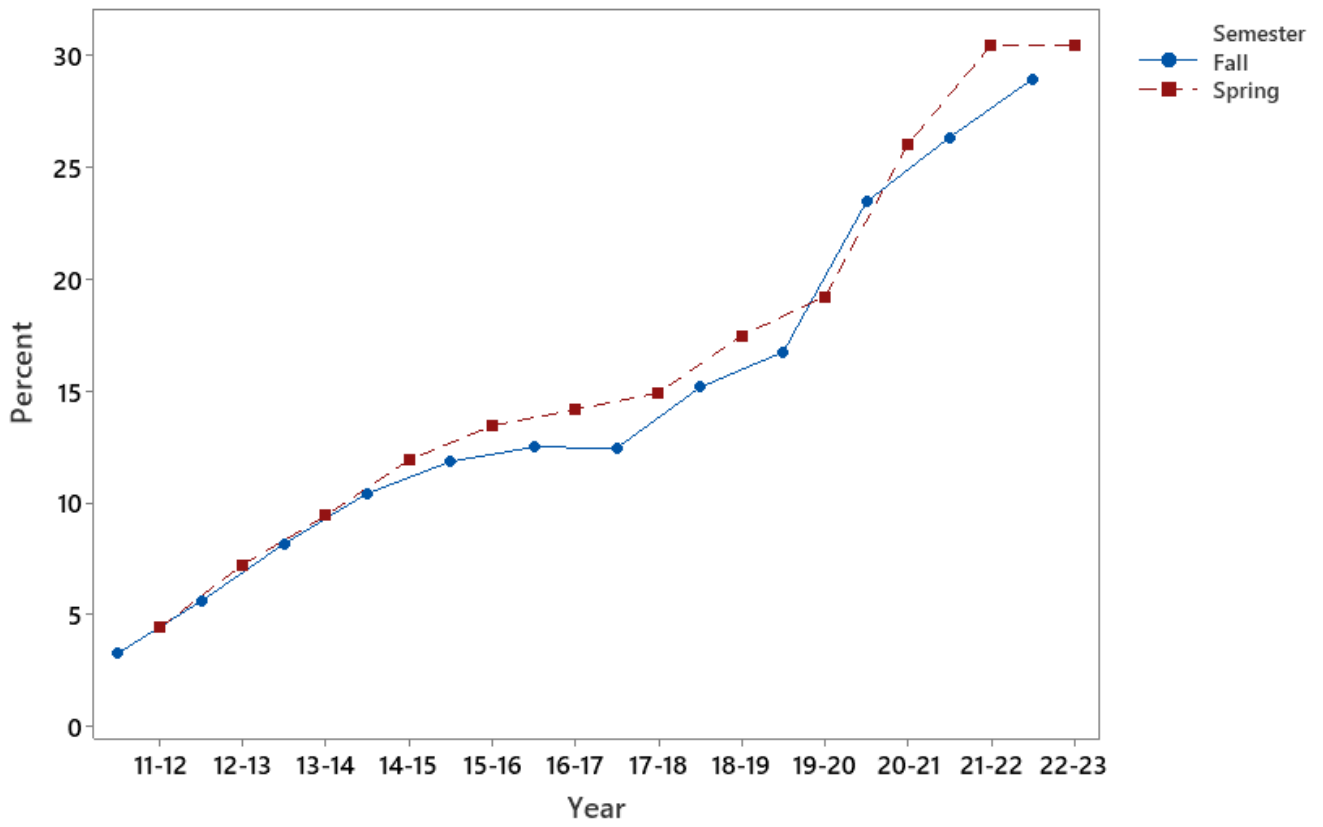


| Semester | Non-e-Campus | | e-Campus | |
|-------------|----------------|------------------|---------------|-----------------|
| | No. Sections | Hrs. Generated | No. Sections | Hrs. Generated |
| Fall 2011 | 5500 98.41% | 181930 96.74% | 89 1.59% | 6129 3.26% |
| Spring 2012 | 5487 97.93% | 166574 95.60% | 116 2.07% | 7667 4.40% |
| Fall 2012 | 5757 97.43% | 178318 94.42% | 152 2.57% | 10536 5.58% |
| Spring 2013 | 5748 96.22% | 162908 92.79% | 226 3.78% | 12666 7.21% |
| Fall 2013 | 5875 95.97% | 171680 91.84% | 247 4.03% | 15257 8.16% |
| Spring 2014 | 5574 95.46% | 156726 90.59% | 265 4.54% | 16273 9.41% |
| Fall 2014 | 5736 94.95% | 171027 89.60% | 305 5.05% | 19861 10.40% |
| Spring 2015 | 5467 94.34% | 155850 88.10% | 328 5.66% | 21055 11.90% |
| Fall 2015 | 5684 94.25% | 171304 88.17% | 347 5.75% | 22992 11.83% |
| Spring 2016 | 5412 93.34% | 153416 86.57% | 386 6.66% | 23798 13.43% |
| Fall 2016 | 5030 92.63% | 166785 87.53% | 400 7.37% | 23760 12.47% |
| Spring 2017 | 4536 91.53% | 148128 85.85% | 420 8.47% | 24405 14.15% |
| Fall 2017 | 4698 92.46% | 163563 87.56% | 383 7.54% | 23244 12.44% |
| Spring 2018 | 4512 92.19% | 144620 85.10% | 382 7.81% | 25315 14.90% |
| Fall 2018 | 4660 92.39% | 152115 84.85% | 384 7.61% | 27167 15.15% |
| Spring 2019 | 4225 91.59% | 134114 82.54% | 388 8.41% | 28379 17.46% |
| Fall 2019 | 4411 92.03% | 141916 83.27% | 382 7.97% | 28509 16.73% |
| Spring 2020 | 4168 91.40% | 123824 80.80% | 392 8.60% | 29426 19.20% |
| Fall 2020 | 4189 91.32% | 125566 76.56% | 398 8.68% | 38440 23.44% |
| Spring 2021 | 3825 90.92% | 107128 73.99% | 382 9.08% | 37658 26.01% |
| Fall 2021 | 4183 90.60% | 116486 73.68% | 434 9.40% | 41614 26.32% |
| Spring 2022 | 3749 89.45% | 99045 69.56% | 442 10.55% | 43334 30.44% |
| Fall 2022 | 3686 88.54% | 115315 71.06% | 477 11.46% | 46972 28.94% |
| Spring 2023 | 3335 87.44% | 104753 69.56% | 479 12.56% | 45848 30.44% |

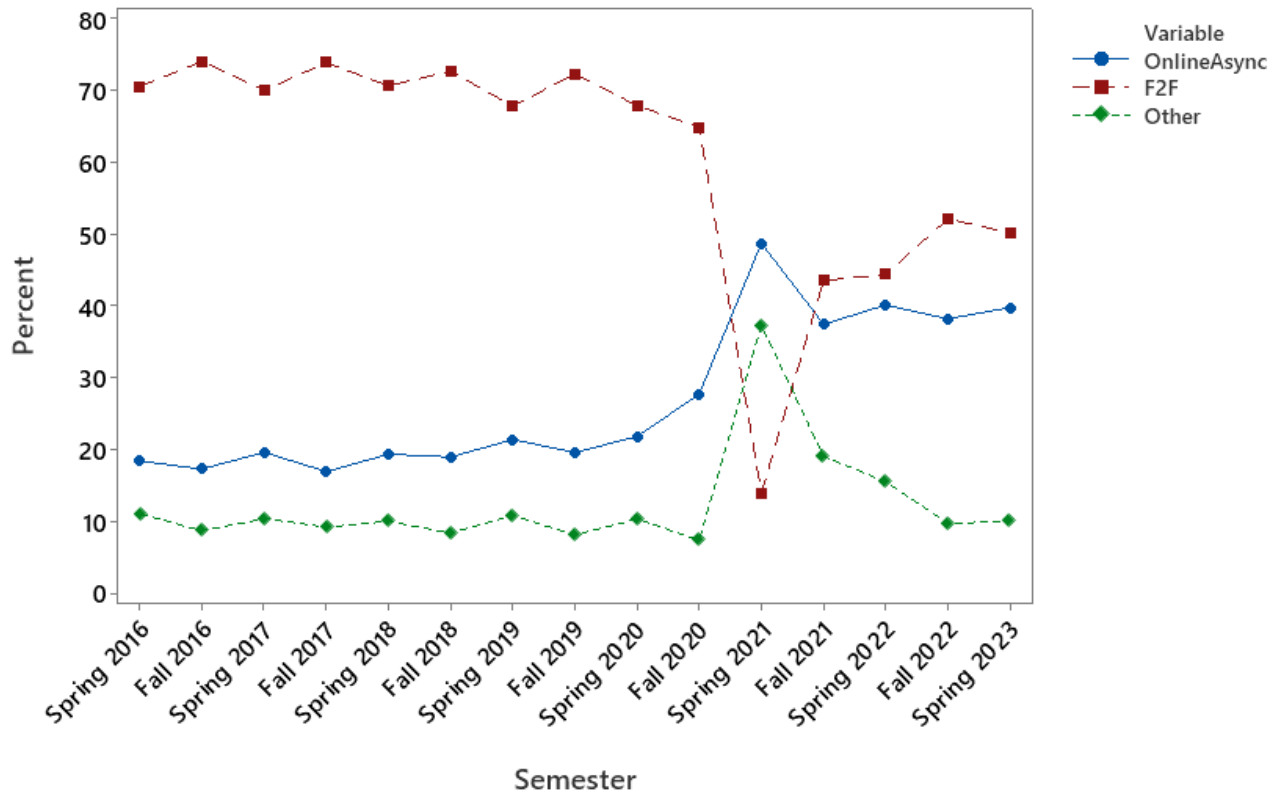
| Semester | Non-e-Campus | | e-Campus | |
|-------------|----------------|-----------------|---------------|-----------------|
| | No. Sections | Hrs. Generated | No. Sections | Hrs. Generated |
| Summer 2012 | 2084 96.30% | 27026 87.89% | 80 3.70% | 3725 12.11% |
| Summer 2013 | 2116 93.63% | 23341 80.30% | 144 6.37% | 5726 19.70% |
| Summer 2014 | 1956 92.48% | 20877 74.73% | 159 7.52% | 7060 25.27% |
| Winter 2014 | 52 100.00% | 586 100.00% | 0 0.00% | 0 0.00% |
| Summer 2015 | 1909 90.65% | 19023 67.91% | 197 9.35% | 8989 32.09% |
| Winter 2015 | 68 100.00% | 821 100.00% | 0 0.00% | 0 0.00% |
| Summer 2016 | 1308 85.43% | 17184 63.81% | 223 14.57% | 9744 36.19% |
| Winter 2016 | 72 100.00% | 983 100.00% | 0 0.00% | 0 0.00% |
| Summer 2017 | 1166 84.99% | 16146 62.55% | 206 15.01% | 9665 37.45% |
| Winter 2017 | 67 100.00% | 854 100.00% | 0 0.00% | 0 0.00% |
| Summer 2018 | 1082 84.01% | 14657 56.30% | 206 15.99% | 11375 43.70% |
| Winter 2018 | 64 98.46% | 885 100.00% | 1 1.54% | 0 0.00% |
| Summer 2019 | 797 78.75% | 10229 43.17% | 215 21.25% | 13468 56.83% |
| Winter 2019 | 50 98.04% | 653 100.00% | 1 1.96% | 0 0.00% |
| Summer 2020 | 822 79.73% | 9880 38.95% | 209 20.27% | 15487 61.05% |
| Winter 2020 | 147 100% | 3093 100.00% | 0 0.00% | 0 0.00% |
| Summer 2021 | 682 76.29% | 9993 40.98% | 212 23.71% | 14392 59.02% |
| Winter 2021 | 174 99.43% | 3995 100.00% | 1 0.57% | 0 0.00% |
| Summer 2022 | 680 75.64% | 9701 39.22% | 219 24.36% | 15033 60.78% |
| Winter 2022 | 160 98.16% | 4128 100.00% | 3 1.84% | 0 0.00% |

Percentage of Total Credit Hours Generated by e-Campus Classes



| Semester | 100% Online: Async | 100% Online: Sync | Applied Learning Experience | Dual Credit: High School | E-Presence | Hybrid F2F Staggered/ Remote | Mixed Mode | Trad F2F | Web-Blended: Async | Web-Blended: Sync |
|-------------|--------------------|-------------------|-----------------------------|--------------------------|---------------|------------------------------|---------------|------------------|--------------------|-------------------|
| Spring 2016 | 32410 18.38% | 0 0.00% | 9041 5.13% | 1689 0.96% | 2966 1.68% | 0 0.00% | 0 0.00% | 124473 70.60% | 5729 3.27% | 0 0.00% |
| Fall 2016 | 32591 17.27% | 0 0.00% | 6195 3.28% | 1977 1.05% | 4142 2.19% | 0 0.00% | 0 0.00% | 139770 74.07% | 4028 2.13% | 0 0.00% |
| Spring 2017 | 33704 19.60% | 0 0.00% | 8455 4.92% | 1422 0.83% | 2348 1.37% | 0 0.00% | 0 0.00% | 120424 70.04% | 5586 3.25% | 0 0.00% |
| Fall 2017 | 31397 16.91% | 0 0.00% | 6335 3.41% | 2490 1.34% | 4449 2.40% | 0 0.00% | 0 0.00% | 137214 73.91% | 3776 2.03% | 0 0.00% |
| Spring 2018 | 32842 19.33% | 0 0.00% | 8614 5.07% | 0 0.00% | 2741 1.61% | 0 0.00% | 1433 0.84% | 120062 70.66% | 4216 2.48% | 0 0.00% |
| Fall 2018 | 33916 18.95% | 0 0.00% | 6718 3.75% | 0 0.00% | 2576 1.44% | 0 0.00% | 1744 0.97% | 130104 72.70% | 3893 2.18% | 0 0.00% |
| Spring 2019 | 34726 21.37% | 0 0.00% | 9380 5.77% | 0 0.00% | 2194 1.35% | 0 0.00% | 1300 0.80% | 110197 67.82% | 4688 2.89% | 0 0.00% |
| Fall 2019 | 33367 19.59% | 0 0.00% | 6102 3.58% | 96 0.06% | 2430 1.43% | 0 0.00% | 1114 0.65% | 123243 72.36% | 3978 2.34% | 0 0.00% |
| Spring 2020 | 33389 21.79% | 0 0.00% | 8780 5.73% | 0 0.00% | 2307 1.51% | 0 0.00% | 1137 0.74% | 104048 67.90% | 3565 2.33% | 0 0.00% |
| Fall 2020 | 45430 27.72% | 0 0.00% | 5678 3.47% | 0 0.00% | 2040 1.24% | 0 0.00% | 844 0.52% | 106372 64.92% | 3498 2.13% | 0 0.00% |
| Spring 2021 | 70566 48.74% | 21796 15.05% | 7600 5.25% | 0 0.00% | 1650 1.14% | 12973 8.96% | 396 0.27% | 20197 13.95% | 4465 3.08% | 5142 3.55% |
| Fall 2021 | 59188 37.44% | 6560 4.15% | 4903 3.10% | 0 0.00% | 1798 1.14% | 11394 7.21% | 1119 0.71% | 68801 43.52% | 3157 2.00% | 1180 0.75% |
| Spring 2022 | 57138 40.13% | 4639 3.26% | 8951 6.29% | 0 0.00% | 1962 1.38% | 3249 2.28% | 951 0.67% | 63201 44.39% | 1420 1.00% | 868 0.61% |
| Fall 2022 | 61998 38.20% | 3944 2.43% | 4809 2.96% | 0 0.00% | 2028 1.25% | 1590 0.98% | 771 0.48% | 84560 52.11% | 1728 1.06% | 859 0.53% |
| Spring 2023 | 59899 39.77% | 3034 2.01% | 6948 4.61% | 0 0.00% | 1747 1.16% | 216 0.14% | 759 0.50% | 75603 50.20% | 1752 1.16% | 643 0.43% |

Percentage of Total Credit Hours Generated by Instructional Method



DFW Rates

| Semester | Non-e-Campus DFW Rate | e-Campus DFW Rate |
|-------------|-----------------------|-------------------|
| Fall 2011 | 18.07% | 14.27% |
| Spring 2012 | 16.74% | 16.02% |
| Fall 2012 | 15.67% | 18.42% |
| Spring 2013 | 14.86% | 14.08% |
| Fall 2013 | 15.66% | 16.94% |
| Spring 2014 | 15.07% | 14.03% |
| Fall 2014 | 15.86% | 14.92% |
| Spring 2015 | 14.82% | 13.06% |
| Fall 2015 | 15.44% | 12.65% |
| Spring 2016 | 14.77% | 11.50% |
| Fall 2016 | 15.05% | 11.64% |
| Spring 2017 | 14.39% | 12.10% |
| Fall 2017 | 14.94% | 11.82% |
| Spring 2018 | 13.23% | 12.45% |
| Fall 2018 | 13.93% | 11.86% |
| Spring 2019 | 12.22% | 12.26% |
| Fall 2019 | 13.20% | 13.33% |
| Spring 2020 | 8.52% | 10.28% |
| Fall 2020 | 18.00% | 15.11% |
| Spring 2021 | 14.33% | 14.54% |
| Fall 2021 | 16.57% | 16.97% |
| Spring 2022 | 14.01% | 12.86% |
| Fall 2022 | 16.36% | 16.58% |

DFW Rates for Non-e-Campus and e-Campus Classes

